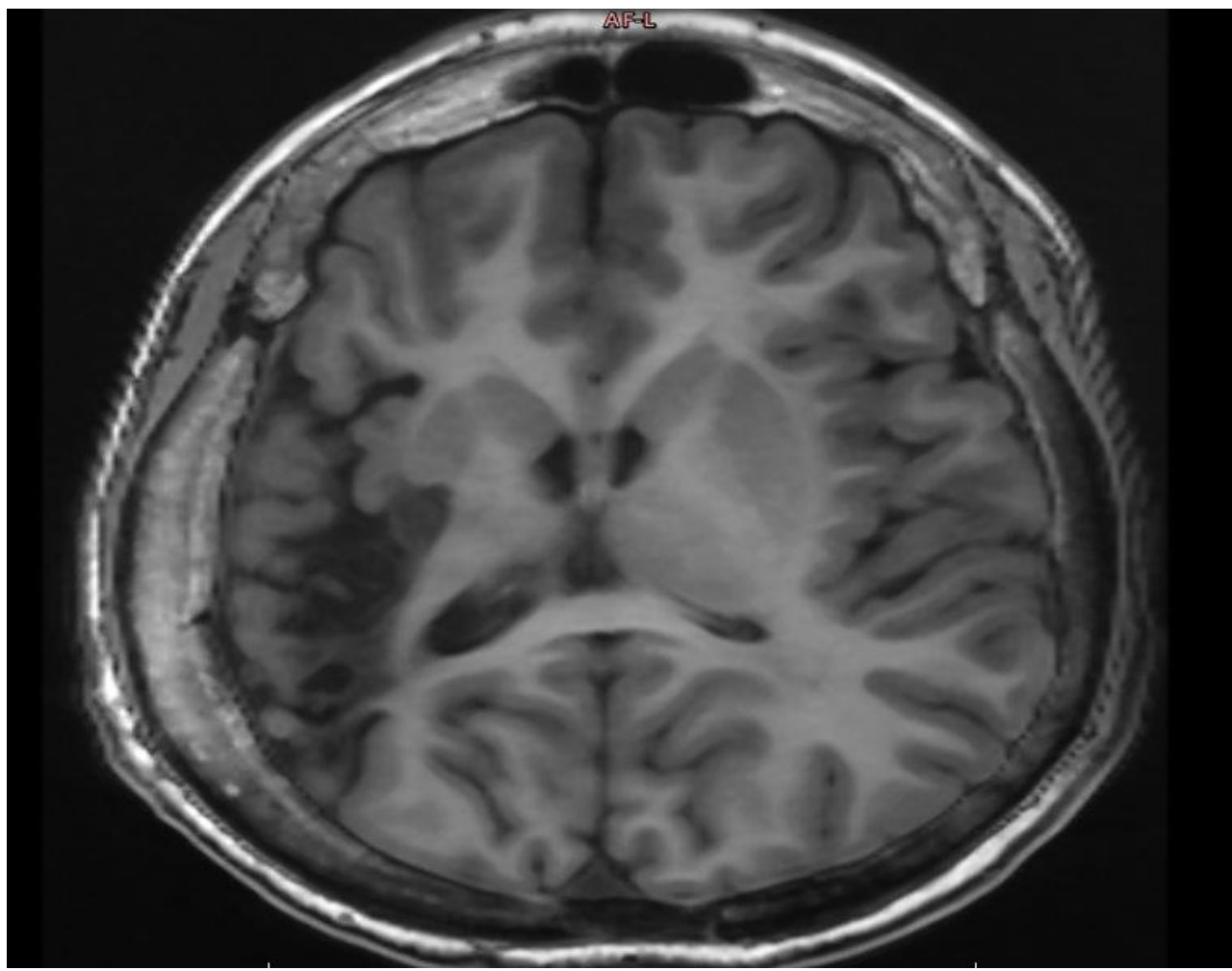


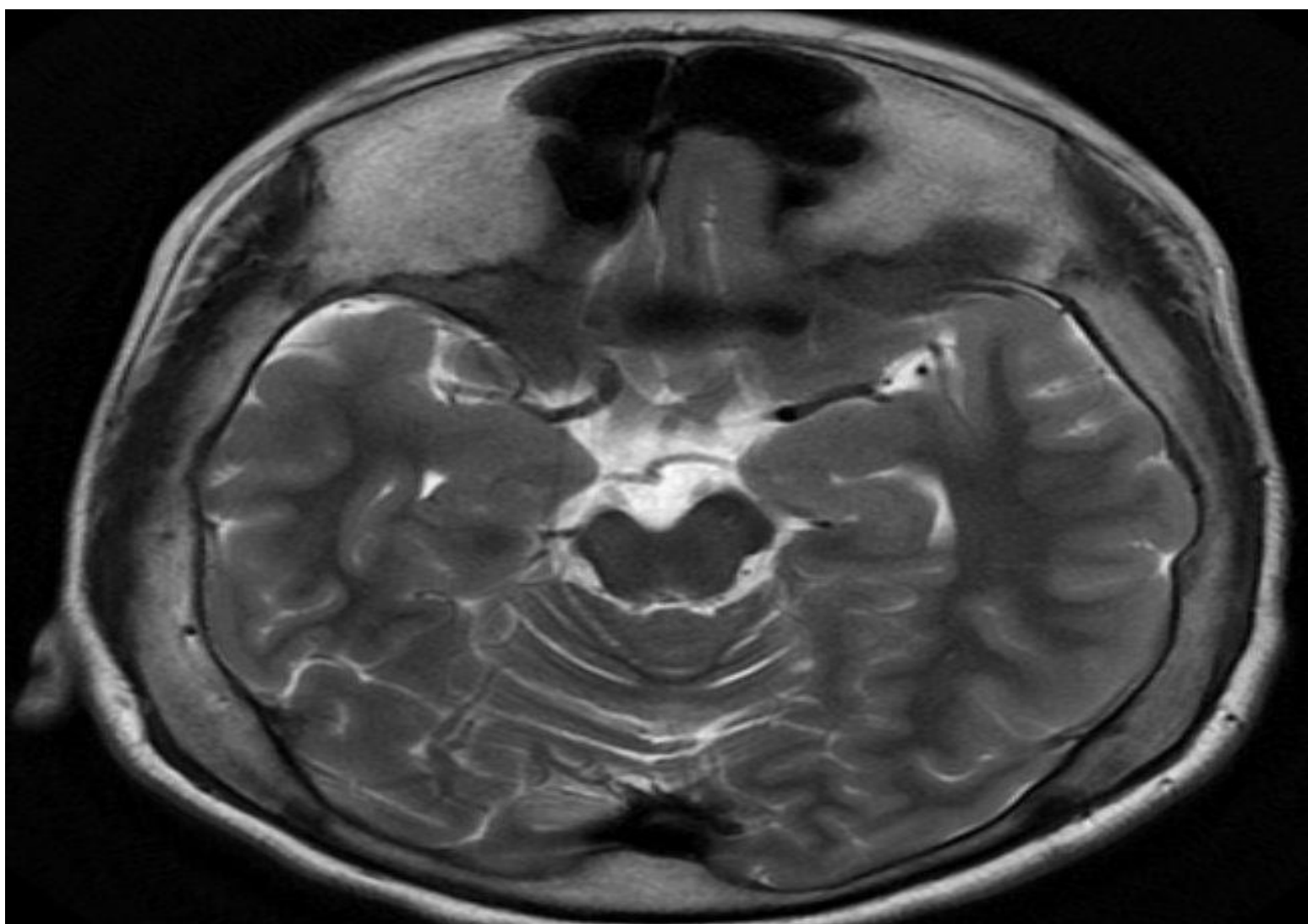


2025

KARNATAKA RADIOLOGY EDUCATION PROGRAM

CASE





Thinning of the grey matter cortex

Reduced volume of the underlying white matter +/- reduced/abnormal myelination

Enlargement of the lateral ventricle

Atrophy of the ipsilateral cerebral peduncle and contralateral cerebellar hemisphere.



Increased lateral ventricle size

Shallow sulci, Enlarged gyri

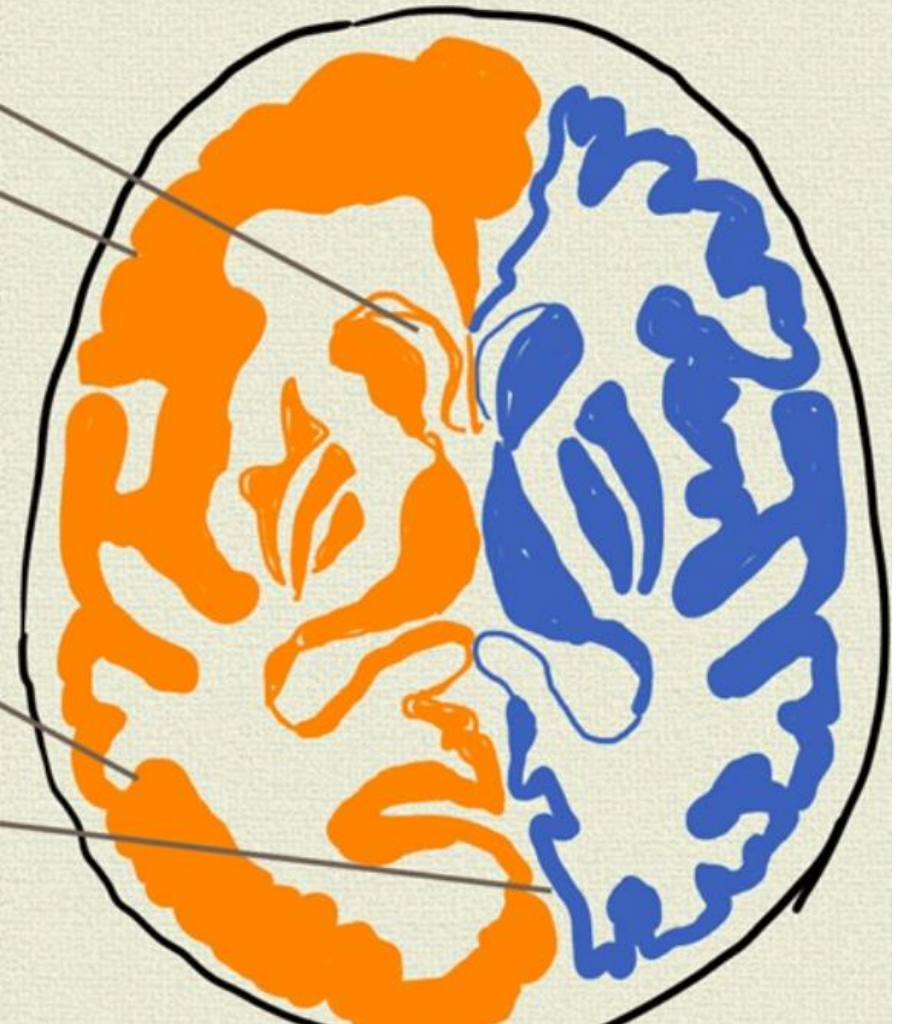
Enlarged/thickened calvarium

White matter calcification

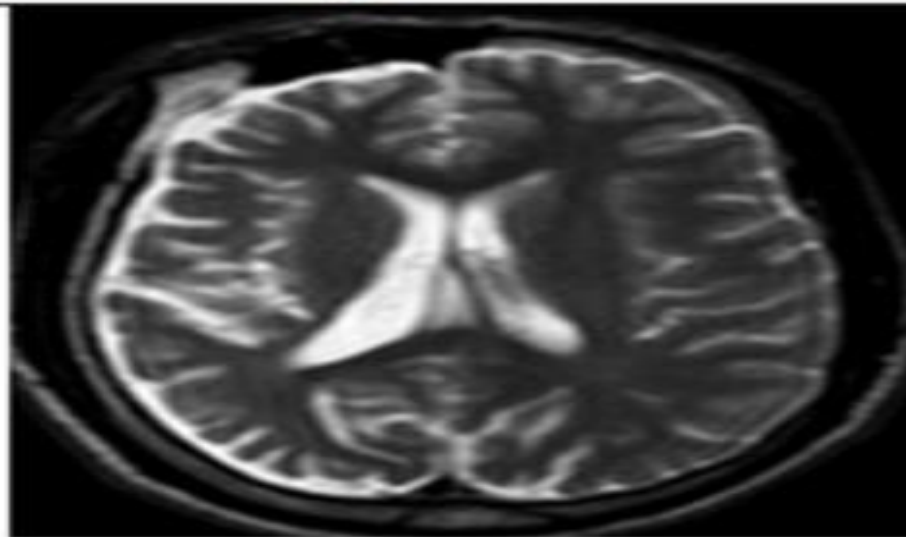
Associated with DVA s

Cortex: polymicrogyria/lissencephaly/
agyria/ pachygyria/ heterotopia

Contralateral displacement of the posterior
falx

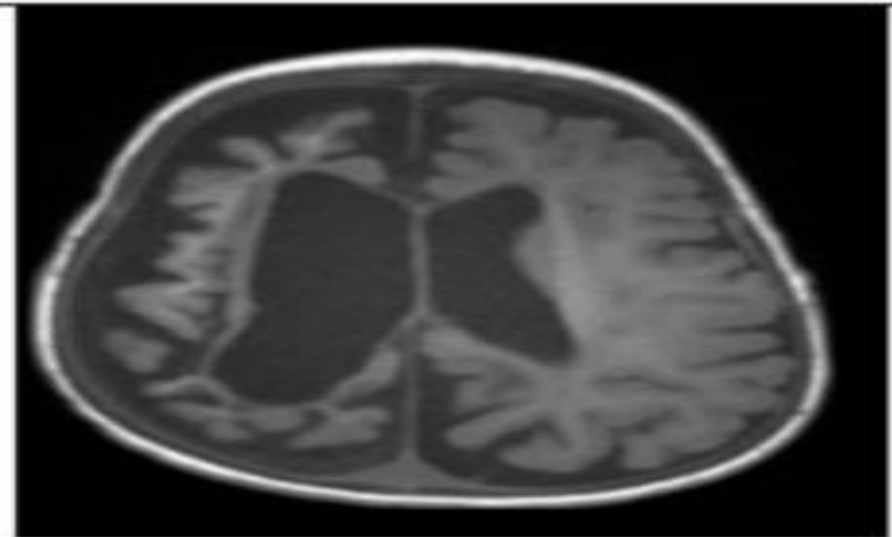


Dyke-Davidoff-Masson syndrome



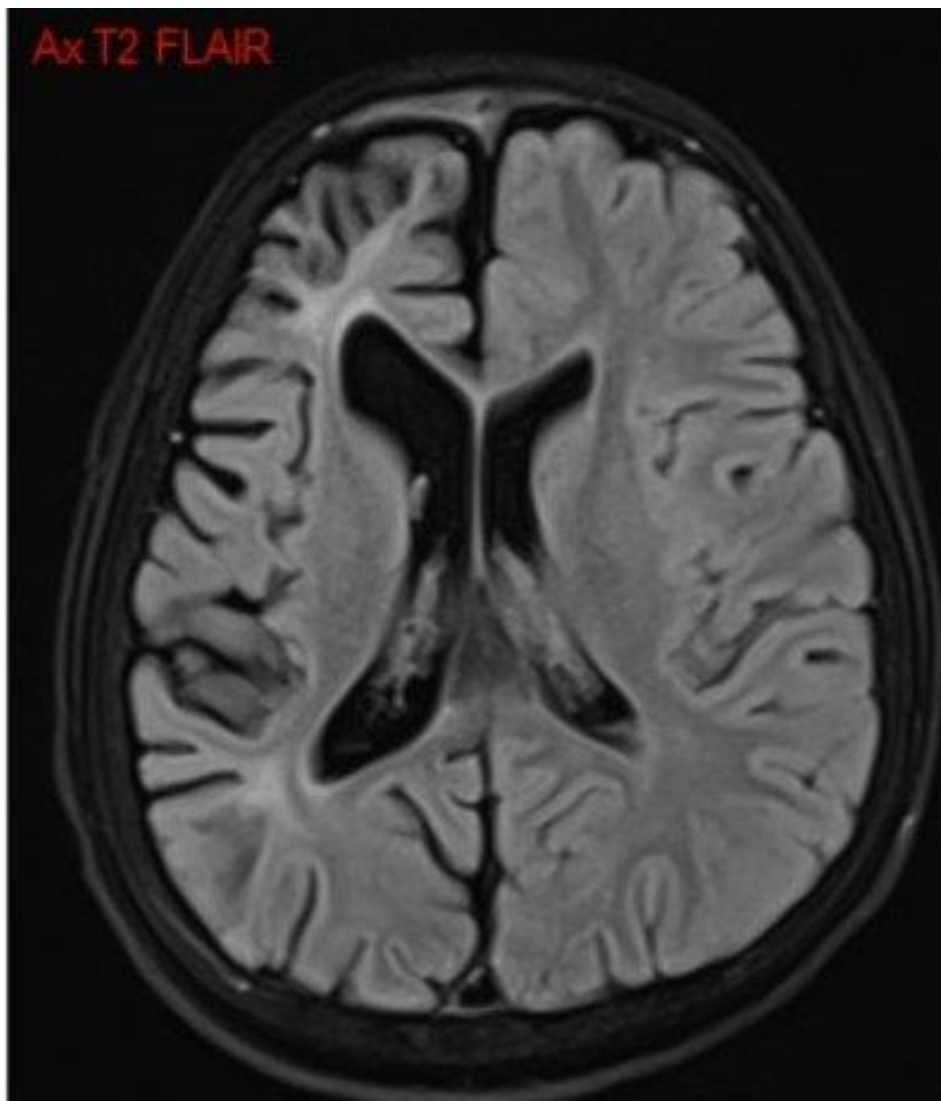
Right cerebral hemiatrophy with enlargement of lateral ventricle and ipsilateral hyperpneumatization of frontal sinus.

Sturge Weber syndrome



Atrophy of right cerebral hemisphere, with ipsilateral ventricular dilatation. No associated ipsilateral hyperpneumatization of frontal sinus.

Ax T2 FLAIR



Ax T2

